

Armitage Shanks
Armitage
Rugeley
Staffordshire
WS15 4BT

Tel 01543 490253
Fax 01543 491677

www.thebluebook.co.uk

Ideal Standard (UK) Ltd
The Bathroom Works
National Avenue
Kingston Upon Hull
HU5 4HS

Tel 01482 346461
Fax 01482 445886

*Armitage
Shanks*

office solutions... what works and why

an informative guide to:
office washroom requirements

*Armitage
Shanks*

the essential specifiers series

If you would like to request the
Hospital, Brassware, School or
Part M brochures from our
'Essential Specifiers Series',
call 0800 590311



For more information go to www.barbourproductsearch.info

Armitage
Shanks

Ideal
STANDARD

JADO

Ideal Standard has a simple business philosophy; commission leading industrial designers to develop state of the art washroom solutions, then invest in technology and traditional skills to manufacture award-winning products.

Armitage Shanks, since 1999 a sister company of Ideal Standard, has been producing sanitaryware of exceptional quality since 1817.

Together, these businesses offer the most comprehensive collection of office washroom products available today.

Both businesses are dedicated to innovation, from Ideal Standard's ceramic disc tap technology to Armitage Shanks waterless urinal, a commitment to product development and sustainable design are a shared passion. Their combined range, especially when joined with Jado brassware and Trevi showers, creates a 'one stop shop' for the specifier.

Part of the Essential Specifiers Series, a collection that will make the process of selecting the right product much simpler, this guide provides the information needed to ensure you meet the needs of your client and current legislation.

As market leaders Armitage Shanks and Ideal Standard believe they have a responsibility to help define the modern office washroom. For over 190 years they have literally set the standard.

your questions answered...

the definitive guide to office requirements

where, who, when, what...

How important are staff toilets? Obviously every business would agree that they are fundamental to the smooth running of their company, but would they see them as an opportunity to invest in the business and contribute to its revenue?

Increasingly they are.

Many forward thinking businesses, concerned with helping their staff perform at optimum levels thereby maximising productivity and profitability, have realised that their washrooms make a significant statement about the company's and managements attitude towards the people who work for it.

Since the Hawthorn Experiments of the 1930's sociologists have known that staff will be more committed and productive if they feel they are being paid attention to. Creating a comfortable, stylish, clean, easy to maintain and economical to run washroom is one of the strongest positive messages a business can send to its staff.

Businesses must also consider the other washroom facilities they provide; executive and visitor. The visitors' toilet will influence their opinion of an organisation dramatically, these 'hidden' areas communicate the standard the company sets for itself and its respect for clients and suppliers.

Whilst the 'key to the executive washroom' is a somewhat outdated notion, washrooms for senior staff provide an opportunity to create an environment where different considerations guide the design and choice of product.

While different organisations and users will require different approaches, the fundamental specification factors are common to all; fitness for purpose, water economy, return on investment, equal access for all, easy cleaning and the effective use of space. This guide will address these factors and reference the applicable standards necessary to create a modern office washroom.

Contents

Information

- Scale of provision (02)
- Water efficiency (36)
- Water technology (37)
- Enhanced capital allowance (37)
- Water saving (37)
- BREEAM (37)
- The washroom environment (38)
- Hygiene (38)
- Durability & maintenance (39)
- Product overview (40)
- Guarantee (44)

Product offering

- City (04)
- Style (10)
- Style - shower room (14)
- Edge (16)
- Sleek (22)
- Chic (26)
- Chic - space efficient (30)
- Part M (32)



Q: what are the scale of provision requirements for staff toilets in an office building?

A: BS6465 section 6.4, recommends the following minimum provision for staff facilities in offices...

a primary consideration when designing any washroom facility is the number of people who will use it. BS 6465-1: 2006 contains detailed information on this issue, broadly defined as 'scale of provision'. the data is summarised in the following tables.

the objective of the BSi is to ensure that toilet facilities are quickly accessible, accommodate the needs of all users and do not necessitate queuing.

in addition to the minimum provision outlined here, specifiers should also consider the impact of non-staff users such as customers or suppliers and either provide separate washrooms or increase staff facilities accordingly.



tables 1 & 2: minimum scale of provision of sanitary appliances for staff toilets in offices, shops, factories and other non-domestic premises used at a place of work.

table #1

facilities for female staff *(and male staff in offices where urinals are not installed in male toilets)		
number of female staff*	number of wcs	number of washbasins
1 to 5	1	1
6 to 15	2	2
16 to 30	3	3
31 to 45	4	4
46 to 60	5	5
61 to 75	6	6
76 to 90	7	7
91 to 100	8	8
above 100	8, plus one for every group, or fraction of a group, of 25 staff	

table #2

facilities for male staff			
number of male staff	number of wcs	number of urinals	number of washbasins
1 to 15	1	1	1
16 to 30	2	1	2
31 to 45	2	2	2
46 to 60	3	2	3
61 to 75	3	3	3
76 to 90	4	3	4
91 to 100	4	4	4
above 100	4, plus 1 for every group, or fraction of a group, of 50 male staff		

Washroom facilities for disabled staff must also be provided, as generally described in Section 7 of BS6465 and the Armitage Shanks 'Part M' Essential Specifiers Series guide.

IMAGINATIVE WASHROOM DESIGN CAN HELP SET THE TONE FOR A BUSINESS. IN THEIR SEMINAL 'IN SEARCH OF EXCELLENCE' PETERS AND WATERMAN ADDRESSED 'PRODUCTIVITY THROUGH PEOPLE'. THEIR RESEARCH DETERMINED THAT INVESTMENT IN STAFF FACILITIES IS REWARDED BY A MORE DEDICATED EMPLOYEE.



CITY

▶ **the facts: the washroom environment**

- Organisations at all levels are now investing in a higher level of washroom specification in order to communicate their value system to their staff.
- A thoughtfully designed office washroom can reduce water usage. Saving water makes good business sense for both environmental and financial reasons.



the facts: water saving

– The Environment Agency estimates that most office buildings can easily reduce water consumption, and their water bills, by around 50%.



S205801
Leadenhall basin

S911267
Concealed hangers

Sensorflow 21
wall-mounted 23cm
tubular spout with
separate sensor

A4183AA
Mains spout

A4184AA
Link spout

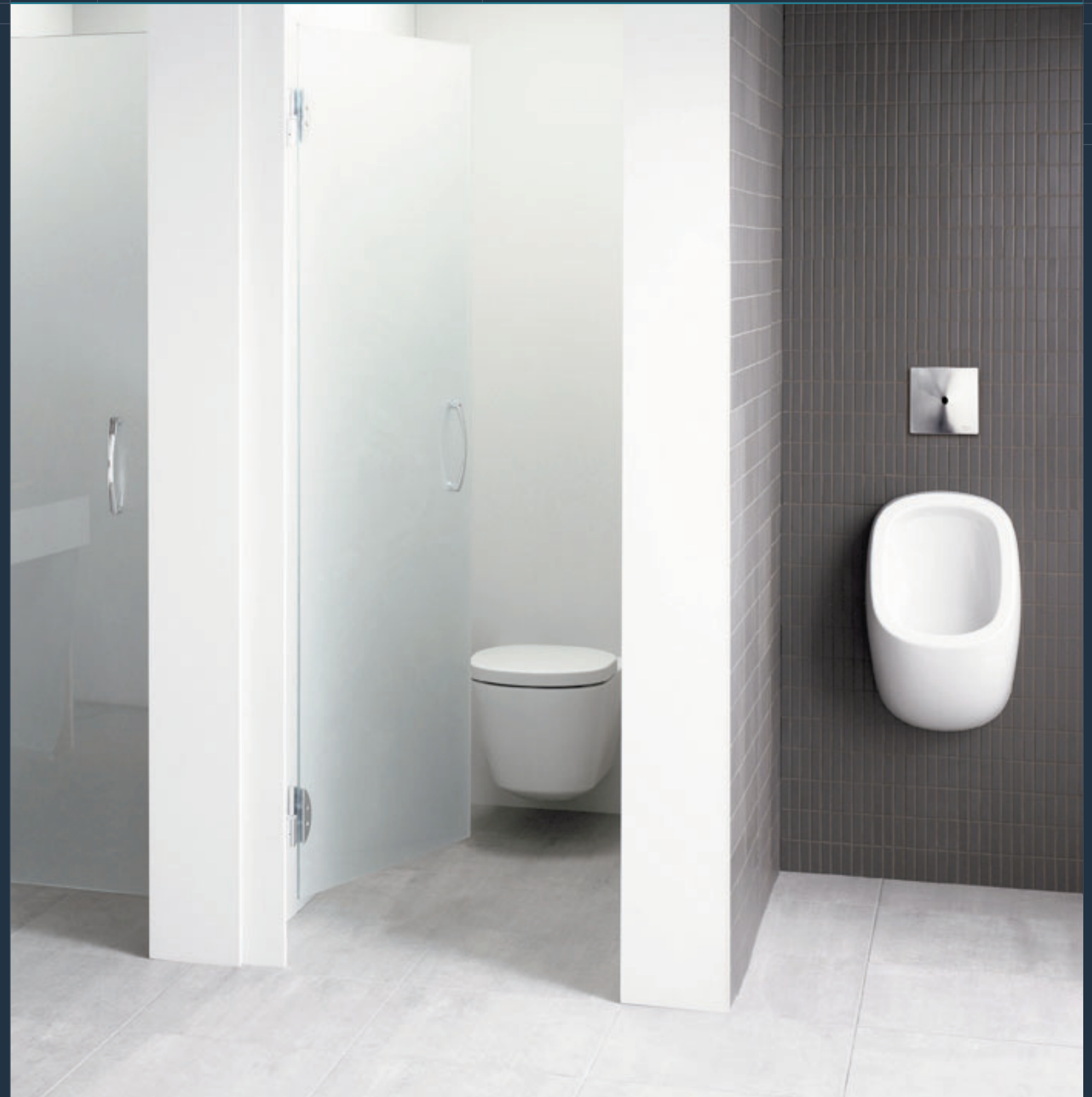
S7435AA
Nuastyle under basin
thermostatic valve

For complete technical
information please call
0870 122 8822

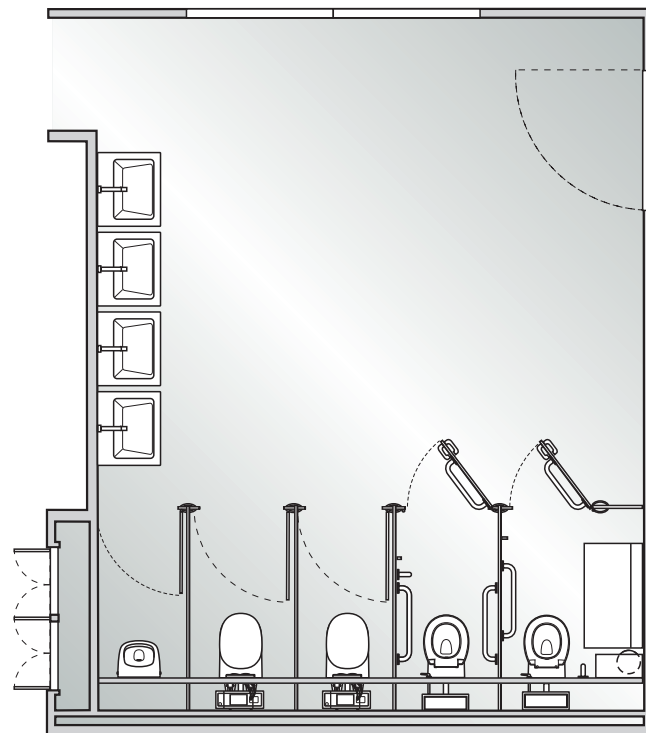


the facts: water saving

- Tax benefits reward water efficient washrooms. The overflowing basin, the arbitrarily flushing urinal or the high capacity WC cistern are products of the past.



- | | |
|------------------------------------------------------|------------------------------------------------------|
| E621501
Jasper Morrison urinal | K310101
Tonic wall-mounted WC |
| E622767
75cm trap, siphon and seal | E006067
WC support brackets |
| K710667
Connecting set for urinals | K704701
Tonic seat and cover |
| A4188XJ
Sensorflow 21 urinal flush control | A4188XJ
Sensorflow 21 urinal flush control |
- (products listed above, see above right and opposite).*
- For complete technical information please call 0870 122 8822



THE ELEGANT SHAPES AND FORMS FASHIONED BY THE WORLD'S MOST PRESTIGIOUS PRODUCT DESIGNERS HELP TO CREATE AN OFFICE WASHROOM WITH AN ACCOMPLISHED SENSE OF STYLE. THE SEAMLESS INTEGRATION OF FUNCTION AND DECOR ARE THE FOUNDATION OF A WASHROOM THAT STRIVES TO GO BEYOND THE COMMONPLACE.

E621001
Jasper Morrison
50cm vessel basin

E009567
Vessel basin
fixing brackets

E6423AA
Jasper Morrison
single lever vessel
basin mixer

E8734AA
Unslotted waste
with swivel plug

For complete technical
information please call
0870 122 8822



the facts: the washroom environment

- Male toilets are a place of single purpose; to use the loo. Women's needs are more complex. Their washroom must also cater for a broader range of female activities.
- How many people will use an office washroom? BS 6465-1: 2006 contains detailed information on 'Scale of Provision' for a range of building types.

STYLE

▶ **the facts: the washroom environment**

– Staff will be encouraged to cycle, run or walk to work if welcoming facilities exist for them to freshen up on their arrival at the office. A healthier workforce is more productive.



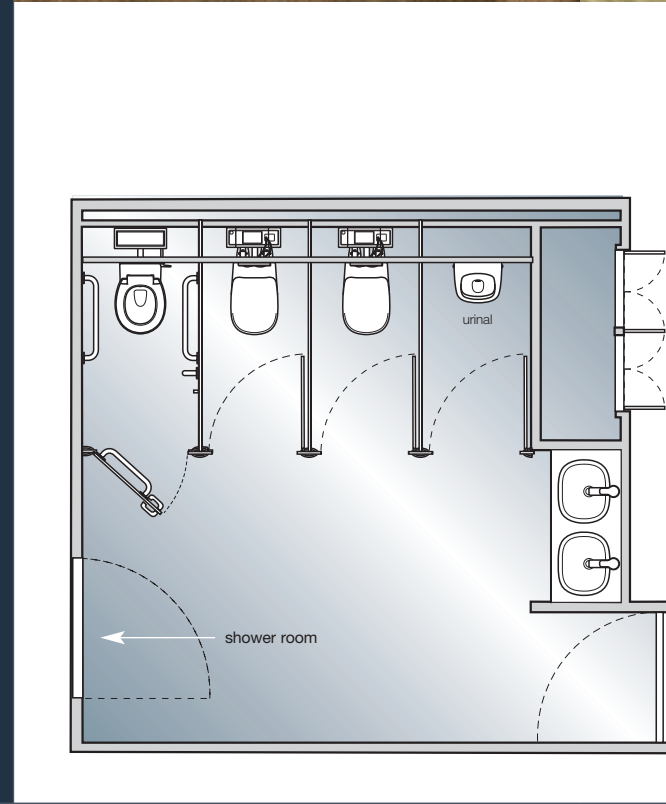
E621701
Jasper Morrison
wall-mounted WC

E006067
WC support brackets

E621401
Soft close seat
and cover

E6203AA
Quick release hinges

S4399AA
Contemporary dual
flushing plate



E621501
Jasper Morrison
urinal

E622767
75cm trap, siphon
and seal

K710667
Connecting set
for urinals

A4188XJ
Sensorflow 21
urinal flush control
*(products listed above,
see above left).*

E621001
Jasper Morrison
50cm vessel basin

E009567
Vessel basin
fixing brackets

E6423AA
Jasper Morrison
single lever vessel
basin mixer

E8734AA
Unslotted waste
with swivel plug

S7435AA
Nuastyle under basin
thermostatic valve
*(products listed above,
see above right and p11).*

For complete technical
information please call
0870 122 8822

style – shower room

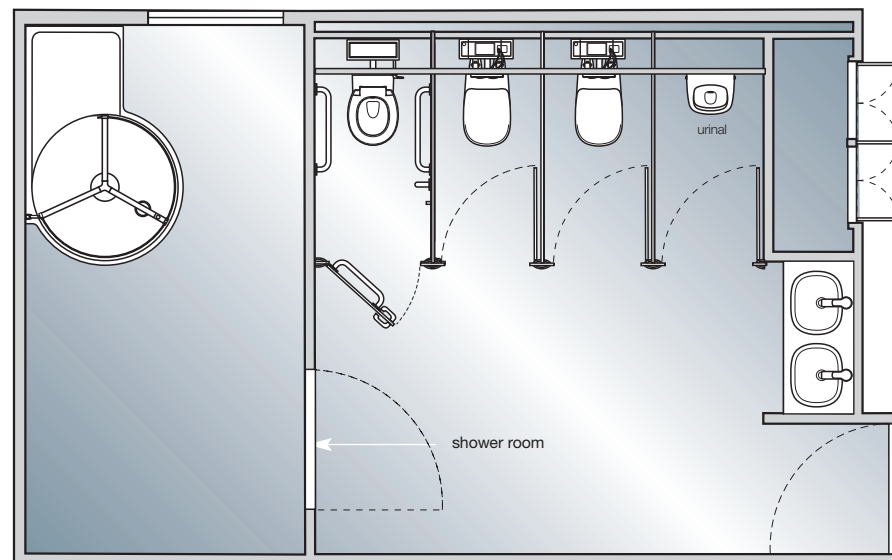
▶ **the facts: the washroom environment**
– A reinvigorating shower at the end of office hours will ensure senior staff can face their inevitable evening meeting at their best.



L8362AA
Serenis 360° corner enclosure with water delivery system, thermostatic valve and 3 function shower head – wet room installation

L8828AA
Waste and trap

For complete technical information please call 0870 122 8822



NO LONGER IS THE LUXURY WASHROOM THE RESERVE OF FT100 COMPANIES.

IF SPACE IS EXTENSIVE AND STYLE IS AT A PREMIUM YOUR CLIENT CAN BENEFIT FROM THE WORK OF LEADING PRODUCT DESIGNERS, CREATING AN ENVIRONMENT THAT PROVIDES AN ATTRACTIVE AND COMFORTABLE RESPITE FROM THE STRESSES OF THE WORKING DAY.



The new Airside basin meets all the ergonomic challenges of high-end washrooms.

It incorporates an integral shelf for necessities, a bold splash-back to keep the wash area clean and an organic form that maximises hygiene performance.

EDGE



the facts: the washroom environment

- Increasingly male and female hand-washing facilities are being shared. Privacy is maintained in WC areas, whilst communal basins save space and improve throughput.
- Hiding pipe-work in a service duct makes an attractive and easy to maintain washroom. Front-access components, such as concealed cisterns, should be considered if a walk-in duct is not practical.



the facts: the washroom environment

– Bold architectural features can be used to create a relaxing and aspirational washroom that enhances the user experience.



- S242901
Airsides basin
- E007067
Fixing bolts
- E0079AA
Contemporary
bottle trap
- Sensorflow 21
wall-mounted 15cm
cast spout
- A4178AA
Mains spout
- A4179AA
Link spout
- S8720AA
Metal slotted
strainer waste

For complete technical
information please call
0870 122 8822



the facts: water saving

– Dual Flush WCs can drastically reduce the water flushed away each day. Some operate on only 4/2.6 litres (full flush/small flush), a water saving of up to 52% versus the 6 litre cistern.



S611901

Contour HygenIQ urinal

S6286AA

Back inlet spreader

S884967

HygenIQ waste

S897067

75mm plastic tubular swivel trap

S927667

Toggle bolts

S927567

Concealed hangers

Sensorflow 21 surface mounted electronic urinal flush control

A4856AA

Mains transformer

A4857AA

Links box

A4671AA

Battery

(products listed above, see left).

J453001

Celano wall-mounted WC

E006167

WC support brackets

J453801

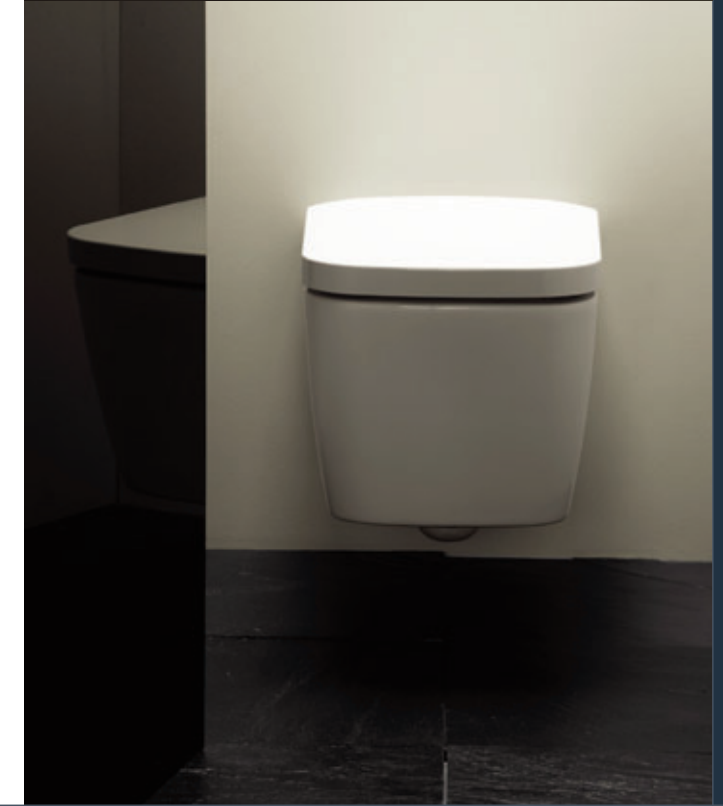
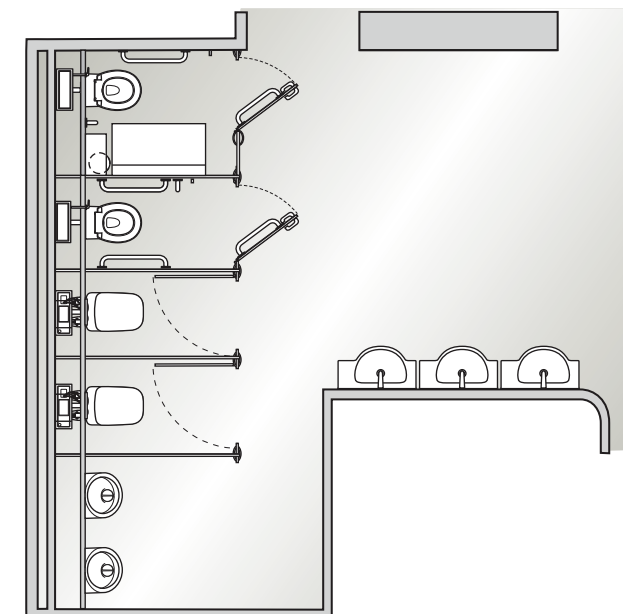
Celano seat and cover, slow close

E4399AA

Contemporary dual flushing plate

(products listed above, see right).

For complete technical information please call **0870 122 8822**



CAN AN OFFICE WASHROOM BE MORE THAN A UTILITARIAN SPACE? BY IDENTIFYING THE KEY FACTORS OF AN INDIVIDUAL PROJECT, THE STAFF WASHROOM CAN IMPROVE PRODUCTIVITY AND THE PERCEPTION OF VISITORS. SOUND PRODUCT SPECIFICATION AND SITE MANAGEMENT WILL ALSO SAVE MONEY.



S257001
Cherwell 42cm
vanity basin

A4183AA
Sensorflow 21
wall-mounted 23cm
tubular spout with
separate sensor –
1 mains spout

SLEEK

▶ **the facts: the washroom environment**

- A pragmatic design approach is needed. Budget issues can be addressed by careful specification, ensuring that the scheme provides value for money.
- The question of space can be resolved by consideration of factors such as product choice, layout and relationships between sanitary items.



the facts: water saving

– Proximity activated sensor taps reduce water use by up to 15% and prevent wastage due to water left running by careless users.



S257001
Cherwell 42cm
vanity basin

Sensorflow 21
wall-mounted 23cm
tubular spout with
separate sensor

A4183AA
Mains spout

A4184AA
Link spout

S8722AA
Metal slotted
strainer waste

S8920AA
Bottle trap

S7435AA
Nuastyle under basin
thermostatic valve

*(products listed above,
see opposite page).*

K310101
Tonic wall-mounted
WC pan

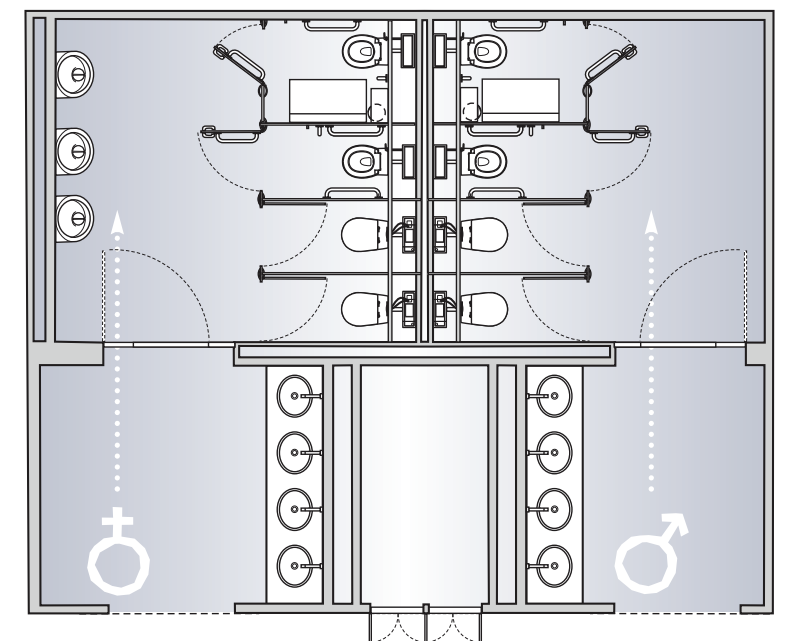
E006067
WC support brackets

K704701
Seat and cover

S4399AA
Contemporary dual
flushing plate

*(products listed
above, see right).*

For complete technical
information please call
0870 122 8822



THE DEMANDS OF THE 21ST CENTURY OFFICE WASHROOM ARE BROAD. FROM THE STATUS OR PRACTICAL NECESSITY OF A PRIVATE BATHROOM TO THE STRINGENT REQUIREMENTS OF PART M OR THE NEED TO OPTIMISE LIMITED SPACE, EACH CAN BE PERFECTLY TAILORED TO SERVE THE INDIVIDUAL AND THE BUSINESS.



K072001
Moments 58cm
semi countertop
basin
A3903AA
Moments basin
mixer
E0079AA
Contemporary
bottle trap

▶ **the facts: the washroom environment**

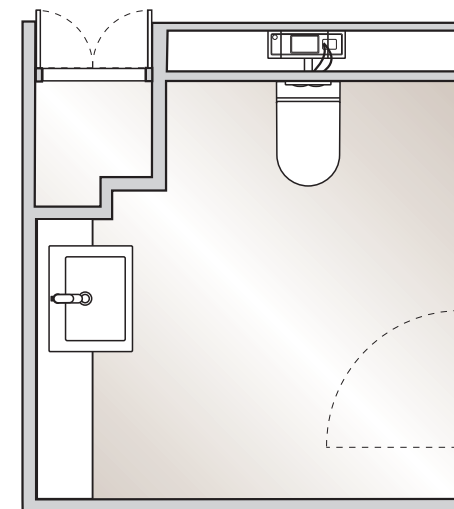
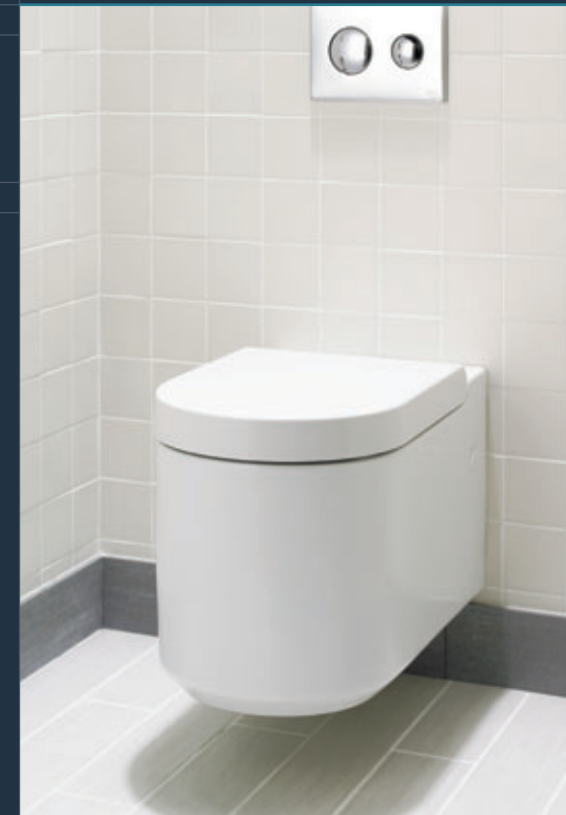
- The nature of a business will set the overall tone for a washroom. A corporate bank will have aspirations different to those of a manufacturing business.
- The patented IdealFlow hidden overflow is an option on all Moments basins. As the basin fills water also rises within a concealed twin pipe system, if it reaches the overflow level it discharges directly into the waste.

CHIC



the facts: water saving

– Exceptional design and functionality co-exist in modern sanitaryware and fittings. Advanced manufacturing methods allow form and function to be fully realised.



K072001
Moments 58cm
semi countertop basin

A3903AA
Moments basin mixer

E0079AA
Contemporary
bottle trap

S7435AA
Nuastyle under basin
thermostatic valve

*(products listed above,
see opposite page and
above right).*

K311301
Moments
wall-mounted WC

E006067
WC support brackets

K705801
Moments seat
and cover

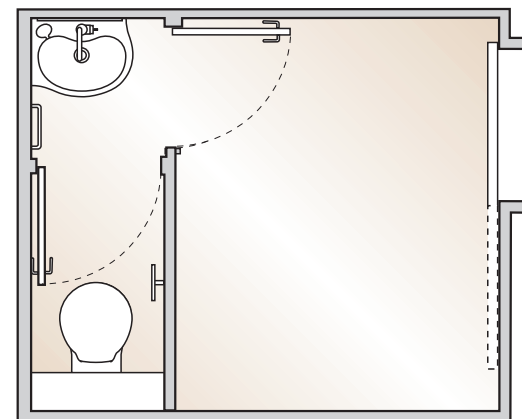
S4399AA
Contemporary dual
flushing plate

*(products listed above,
see opposite page and
above left).*

For complete technical
information please call
0870 122 8822

chic - space efficient

▶ **the facts: the washroom environment**
 – A lack of space should not mean a lack of style or functionality. A short projection basin and compact WC make even the smallest office toilet an inviting and comfortable space.



- E712201**
Space offset corner basin left hand – right hand available
- E750201**
Space semi pedestal
- E0067AA**
Silver single lever basin mixer
- S7435AA**
Nuastyle under basin thermostatic valve
- (products listed above, see opposite page and above right).*
- E717401**
Space wall-mounted WC
- E006067**
WC support brackets
- E709101**
Space seat and cover
- S4399AA**
Contemporary dual flushing plate
- (products listed above, see opposite page and above left).*
- For complete technical information please call 0870 122 8822



the facts: part m

– In 2004 the Disability Discrimination Act addressed the issue of building access. Now anyone who is permanently, or temporarily disabled is within the remit of Part M.

PART M

contour 21 wall-mounted WC doc m pack



product codes

wall-mounted wc doc m pack

- S6956AA White with chrome rails and white seat
- S6956MY White with stainless steel rails and grey seat

Wall basin without overflow for additional hygiene

Thermostatic Sequential Mixer. TMV3 approved to prevent scalding

Thermostat is within mixer (not separate as with other suppliers). This cuts down risk of legionella bacteria forming between separate thermostat and mixer

Easy operation handle

Wall-mounted WC designed for easy wheelchair access

Luxury back support

Push button flushing control

Toilet-roll holder.

Stylish concealed fixing grab rails finished in chrome or stainless steel

Lightweight luxury aluminium hinged support arm

LANTAC approved

contour 21 doc m shower pack



product codes

doc m shower pack

- S6960AC White with white rails
- S6960LI White with blue rails
- S6960MY White with stainless steel rails

Accessible shower and changing area for wheelchair and care assisted use

Easily adjusted diverter for fixed or moveable shower head

Friction hand set for easy up and down movement on rail

Lever operated thermostatic valve to deliver safe, stable hot water at a set temperature

Hinged seat and back support

Concealed fixing grab rails tested to 200kg

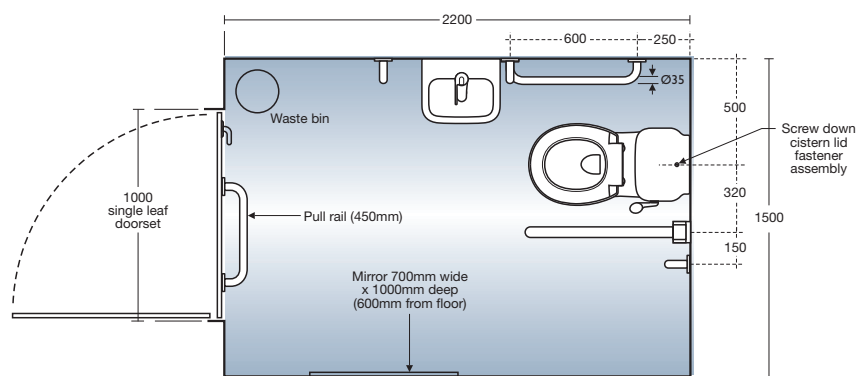
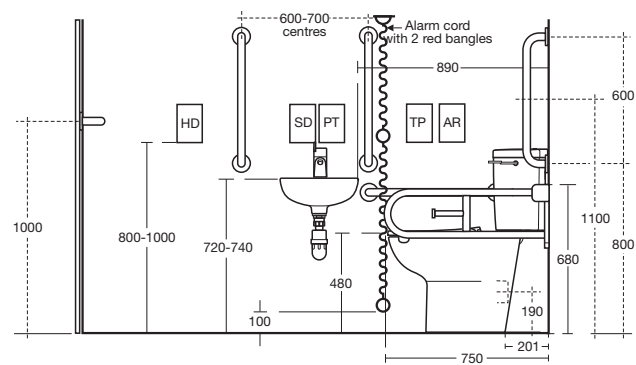
Hinged support arm tested to 200kg.

Available with white, blue or stainless steel rails

OPTION
Also available with corner WC and basin, see Blue Book for further details

contour 21 close coupled WC doc m pack

For complete technical information please call 0870 122 8822



pack product codes

close coupled wc doc m pack

- S6955AC
White with white rails and white seat
- S6955LI
White with blue rails and seat
- S6955MY
White with stainless steel rails and grey seat

Wall basin without overflow for additional hygiene

Thermostatic Sequential Mixer. TMV3 approved to prevent scalding

Thermostat is within mixer (not separate as with other suppliers). This cuts down risk of legionella bacteria forming between separate thermostat and mixer

Easy operation handle.

Raised height WC set at 480mm for wheelchair height access

Cistern lid is screwed down to cistern for improved safety

Spatula lever on cistern for easy flushing with hand or elbow

Toilet-roll holder

Concealed fixing grab rails tested to 200kg weight

Hinged support arm tested to 200kg

Available with white or blue rails and seat or with stainless steel rails and grey seat

LANTAC approved



the facts: part m

- Simply adding a cubicle suitable for wheelchair access is not enough. Colour and texture ensure visually impaired users can navigate the toilet.



the objective of each essential specifiers series guide is to simplify the process of matching product to project. the next few pages review some of the key issues to be considered in office washroom design.

- achieving water efficiency
- the water technology list
- enhanced capital allowance
- water saving
- BREEAM
- the washroom environment
- hygiene
- durability & maintenance

1. achieving water efficiency

Armitage Shanks has developed water saving products that will help to maximise water efficiency. Let us help you select the products that will achieve the optimal BREEAM and COSH ratings for your project.

Water efficient product

taps & mixers

Almost 33% of all the water used in office buildings comes out of washroom taps and mixers. By specifying a tap with a flow limiter, the Environment Agency has measured an 80% reduction in this figure. Alternatively electronic sensor taps, or timed shut-off push taps, may be used

to reduce consumption by 15% and prevent wastage due to taps left running by careless users. Why use a manual mixer's full flow rate? A special cartridge allows the lever to be 'clicked' from off to 50% flow and then to

WCs

A water efficient WC can reduce the volume flushed each day by over 50%. The office washroom is particularly suitable for dual flush WCs as it is an easily controlled environment with repeat users. 6/4 litre dual flush WCs are now common, however an additional 34% water saving is possible by using a 4/2.6 litre water saving dual flush cistern. By adding delayed-fill operation, where the cistern only begins

to fill once all the water has emptied out, a further saving of up to 0.5 litre per flush is possible. Correct usage and maintenance are important to realise the water saving benefits of this technology. For visitor areas a single flush 4.5ltr cistern should be considered. This removes any confusion about which flush button to press and so stops the infrequent user wasting water by 'double flushing'.

urinals

Urinals typically account for 20% of water usage in offices. Each urinal in an uncontrolled washroom will use 900 litres of water per day. Current Water Supply (Fittings) regulations 1999 call for a flush control device to be used that stops urinals flushing when the washroom has not

been used for a set time. Waterless urinals do not use water to flush. A replaceable cartridge prevents odour and normal cleaning keeps the bowl clean, and it has the potential to save at least 80,000 litres of water per urinal per year.

For more information go to www.barbourproductsearch.info

check list



2. the water technology list

In March 2001 the Chancellor announced support for organisations that invest in environmentally friendly technologies. Key to this new policy was the introduction of the Water Technology List (WTL) of water efficient products. The Water Technology List was published in 2003 following lengthy consultation

between the Department for Environment, Food and Rural Affairs (DEFRA) and HM Revenue & Customs. Available on the web (www.eca-water.gov.uk) and updated monthly, the WTL describes both the products and practices that DEFRA believe will make a positive impact on water saving within any organisation.

WTL products could reduce water usage by 50% per annum.

3. enhanced capital allowance

The Enhanced Capital Allowance (ECA) scheme works in conjunction with the Water Technology List. Any commercial operation that pays UK corporation tax can claim 100% first year capital allowances on investments in water efficient products (and installation) chosen from the WTL.

Organisations that are run as a Trust and undertake fundraising trading activities may be able to gain tax relief on any profits made. Similarly, any organisation that is run as a charity is liable for corporation tax and may also receive tax relief on any profitable activity.

The ECA provides 100% tax relief in the first year.



4. water saving

The Environment Agency estimates that most office buildings can easily reduce water consumption, and their water bills, by around 50%. Consider the humble urinal. Increasing the ratio of urinals to WCs in male toilets will immediately save water. Even so, urinals still account for 20% of water usage in offices.

Fitting a flush control device that stops them auto-flushing when the washroom has not been used for a prescribed period, or when the office is unoccupied, can reduce the volume of water used by 74%. Better yet, recent developments in waterless urinal technology can reduce water usage to virtually zero.

Correct usage and maintenance are important to realise the water saving benefits of technology.

5. breem

The Building Research Establishment promotes an Environmental Assessment Method (BREEAM) as way to judge the environmental friendliness of buildings. It 'sets the standard for best practice in sustainable development' and measures a buildings level of achievement. Within the BREEAM program a section devoted to offices clearly outlines the steps necessary to achieve compliance and the highest points

ranking. The benefits of creating and using a BREEAM building extend to both designer and client. The client receives a building that supports its environmental strategy and is economic to run, while the designer can clearly demonstrate compliance with environmental requirements and has the satisfaction of working to a formalised best practice.

Over 65,000 buildings in the UK have already achieved BREEAM certification.

*Not applicable in Republic of Ireland.



6. the washroom environment

The use of space is crucial to the success of an office washroom. Both large and small facilities have their own challenges.

Surfaces can be used to create an illusion of space in smaller washrooms. Bright and simple wall colours will bounce ambient light around the room to give the illusion of space. Floor finishes are equally critical and any pattern should be chosen to ensure it does not make the room feel smaller. In the case of floor tiles, the larger the better for a small room.

In larger washrooms it is important that the designer incorporates a sensible pattern of user flow so that the facilities can be used efficiently. The creation of awkward traffic patterns within the room may easily lead to capacity being exceeded.

Busy washrooms are perceived as 'dirty'. People maybe obliged to use the last cubicle/urinal that 'no one else wants'. This last WC or urinal is often perceived as below standard, or unclean. Using scale of provision data will ensure overcrowding does not occur.

Flushing a WC with the lid 'up' allows atomised bacteria to become airborne.

All our senses are used to judge hygiene; aroma, lighting, texture and colour all play a part in our assessment. The designer must therefore produce a scheme that does not just rely on a cleaning regime for its hygiene performance. It must feel clean too.



7. hygiene

Cleanliness and hygiene are the primary concern of washroom users. There are several points that must be considered when designing hygiene into the washroom.

We adopt rituals to deal with many aspects of life. In the washroom we have personal rituals aimed at avoiding physical contact with surfaces. The challenge is to produce a design that reduces contact with items in the washroom.

Product selection is crucial. Remote operated 'no-touch' taps such as Sensorflow are triggered by proximity sensors and completely eliminate the need to touch a handle or lever. After washing their hands people want to avoid touch-contamination and will try to push open doors with elbows, use tissue paper to grip the door handle or wait for another user to open the door! A one-way, door-less washroom that eliminates the use of hands after washing is the ultimate objective.



8. durability & maintenance

Vitreous china is the logical sanitaryware choice for the office washroom. It can be cast into attractive shapes, is easy to clean and will withstand constant use.

Cleaning and maintenance costs have a significant impact on life costs.

A smoothly contoured product, such as a wall-mounted WC, is much easier, faster and economic to clean effectively. The free floor space under the suspended WC bowl makes floor washing much simpler as there are no awkward spaces for a mop to reach. This is an area in which thorough cleaning is critical.

Ease of maintenance can also be built in to the specification. The cable actuated pop-up basin waste, for example, has a durable alloy cable that does not work loose and never requires adjustment, it won't go missing and it will always work.

product overview

From the smallest organisation to the largest blue chip company, from the staff washroom to the executive bathroom, Armitage Shanks provides a choice of products to satisfy the needs of any client. With almost 200 years of market leading experience, would you expect anything less?



city

this imaginative washroom design helps set the tone for business

pages: 04-09

specification

S205801 Leadenhall basin	E621501 Jasper Morrison urinal
S911267 Concealed hangers	E622767 75cm trap, siphon and seal
Sensorflow 21 wall-mounted 23cm tubular spout with separate sensor	K710667 Connecting set for urinals
A4183AA Mains spout	A4188XJ Sensorflow 21 urinal flush control
A4184AA Link spout	K310101 Tonic wall-mounted WC
S7435AA Nuastyle under basin thermostatic valve	E006067 WC support brackets
	K704701 Tonic seat and cover

style

elegant shapes and forms create an office washroom with accomplished sense of style

pages: 10-13



style shower room

a seamless integration of function and decor strives to go beyond the commonplace

pages: 14-15



edge

a luxury washroom providing an attractive and comfortable respite

pages: 16-21



specification

E621001 Jasper Morrison 50cm vessel basin	E6203AA Quick release hinges
E009567 Vessel basin fixing brackets	S4399AA Contemporary dual flushing plate
E6423AA Jasper Morrison single lever vessel basin mixer	E621501 Jasper Morrison urinal
E8734AA Unslotted waste with swivel plug	E622767 75cm trap, siphon and seal
E621701 Jasper Morrison wall-mounted WC	K710667 Connecting set for urinals
E006067 WC support brackets	A4188XJ Sensorflow 21 urinal flush control
E621401 Soft close seat and cover	S7435AA Nuastyle under basin thermostatic valve

L8362AA
Serenis 360° corner enclosure with water delivery system, thermostatic valve and 3 function shower head – wet room installation

L8828AA
Waste and trap

S242901 Airsides basin	S884967 HygenIQ waste	E006167 WC support brackets
E007067 Fixing bolts	S897067 75mm plastic tubular swivel trap	J453801 Celano seat and cover, slow close
E0079AA Contemporary bottle trap	S927667 Toggle bolts	E4399AA Contemporary dual flushing plate
Sensorflow 21 wall-mounted 15cm cast spout	S927567 Concealed hangers	
A4178AA Mains spout	Sensorflow 21 surface mounted electronic urinal flush control	
A4179AA Link spout	A4856AA Mains transformer	
S8720AA Metal slotted strainer waste	A4857AA Links box	
S611901 Contour HygenIQ urinal	A4671AA Battery	
S6286AA Back inlet spreader	J453001 Celano wall-mounted WC	



sleek
an individual staff washroom
pages: 22-25

specification

S257001 Cherwell 42cm vanity basin	K310101 Tonic wall-mounted WC pan
Sensorflow 21 wall-mounted 23cm tubular spout with separate sensor	E006067 WC support brackets
A4183AA Mains spout	K704701 Seat and cover
A4184AA Link spout	S4399AA Contemporary dual flushing plate
S8722AA Metal slotted strainer waste	
S8920AA Bottle trap	
S7435AA Nuastyle under basin thermostatic valve	



chic
a private office bathroom perfectly tailored for the individual
pages: 26-29

K072001 Moments 58cm semi countertop basin	K311301 Moments wall-mounted WC
A3903AA Moments basin mixer	E006067 WC support brackets
E0079AA Contemporary bottle trap	K705801 Moments seat and cover
S7435AA Nuastyle under basin thermostatic valve	S4399AA Contemporary dual flushing plate



chic
space efficient
a private office bathroom optimising limited space
pages: 30-31

E712201 Space offset corner basin left hand – right hand available	E717401 Space wall-mounted WC
E750201 Space semi pedestal	E006067 WC support brackets
E0067AA Silver single lever basin mixer	E709101 Space seat and cover
S7435AA Nuastyle under basin thermostatic valve	S4399AA Contemporary dual flushing plate

part m



contour 21 wall-mounted wc doc m pack
with clean lines and contemporary styling, this pack combines practical features with an elegant style
page: 33

specification

Wall-mounted wc doc m pack:

- S6956AA**
White with chrome rails and white seat
- S6956MY**
White with stainless steel rails and grey seat

Wall basin without overflow for additional hygiene

Thermostatic Sequential Mixer. TMV3 approved to prevent scalding

Thermostat is within mixer (not separate as with other suppliers). This cuts down risk of legionella bacteria forming between separate thermostat and mixer

Easy operation handle

Wall-mounted WC designed for easy wheelchair access

Luxury back support

Push button flushing control

Toilet-roll holder

Stylish concealed fixing grab rails finished in chrome or stainless steel.

Lightweight luxury aluminium hinged support arm

LANTAC approved



contour 21 doc m shower pack
with its thermostatic shower and option fixed or movable shower head, this design sets the standard for practical and flexible shower options
page: 33

doc m shower pack:

- S6960AC**
White with white rails
- S6960LI**
White with blue rails
- S6960MY**
White with stainless steel rails

Accessible shower and changing area for wheelchair and care assisted use

Easily adjusted diverter for fixed or moveable shower head

Friction hand set for easy up and down movement on rail

Lever operated thermostatic valve to deliver safe, stable hot water at a set temperature.

Hinged seat and back support

Concealed fixing grab rails tested to 200kg

Hinged support arm tested to 200kg

Available with white, blue or stainless steel rails

OPTION
Also available with corner WC and basin, see Blue Book for further details



contour 21 close coupled wc doc m pack
good design and practical elements come together in this stylish yet easy to use model
pages: 34-35

close-coupled wc doc m pack:

- S6955AC**
White with white rails and white seat
- S6955LI**
White with blue rails and seat
- S6955MY**
White with stainless steel rails and grey seat

Wall basin without overflow for additional hygiene

Thermostatic Sequential Mixer. TMV3 approved to prevent scalding

Thermostat is within mixer (not separate as with other suppliers). This cuts down risk of legionella bacteria forming between separate thermostat and mixer

Easy operation handle

Raised height WC set at 480mm for wheelchair height access

Cistern lid is screwed down to cistern for improved safety

Spatula lever on cistern for easy flushing with hand or elbow

Toilet-roll holder

Concealed fixing grab rails tested to 200kg weight

Hinged support arm tested to 200kg

Available with white or blue rails and seat or with stainless steel rails and grey seat

LANTAC approved

For more information go to www.barbourproductsearch.info

guarantee

lifetime

all ceramic products

5 years

on taps and mixers, toilet seats and cistern fittings

Our confidence in the quality and reliability of our product allows us to offer outstanding extended guarantees on all our products – where the product fails within 5/25 years/lifetime we offer a free replacement or replacement part (or nearest equivalent). So when your washroom has been satisfactorily installed and is working well, please ensure you register your guarantee.

This guarantee is transferable – it applies to the product not the purchaser provided the guarantee registration is passed on to the new owner.

Liability is limited to individual products and the guarantee does not cover the consequential loss or damage or installation costs. This guarantee does not affect your statutory rights. Products must be installed, used and cared for in line with our fixing instructions and local water regulations, and room must be adequately ventilated.

Parts (eg flushvalves) are guaranteed for five years and will be replaced if found to be faulty. The guarantee does not cover general wear and tear.

Applies to UK and Republic of Ireland only.

You can register for guarantees on a bathroom bought on your behalf by a plumber or builder.

Colours printed in this book are as near as possible to the manufactured range of Armitage Shanks and Ideal Standard quality bathrooms. For accurate comparisons of colours, see actual ware on display at Armitage Shanks and Ideal Standard retailers. Our policy is one of continuous improvement and we reserve the right to change specification and design at any time without notice.

All measurements are in millimetres and are approximate. Products can be subject to tolerances due to manufacturing processes.

Additional Resources

Further information about the Disability Discrimination Act is available from the following organisations.

Department for Work & Pensions

www.dwp.gov.uk

Disability Rights Commission

www.drc-gb.org

Direct Gov

www.direct.gov.uk

technical helpline

0870 122 8822

Armitage
Shanks

CREDITS

p8 – 9

Floor tiles EGZ4240 450 x 450mm
Wall tiles TM6353 Stack 22 x 72mm

p10 – 12

Floor tiles EA6550STR 600 x 600mm

p15

Floor tiles RO9202 300 x 300mm
Wall tiles EGZ4290 300 x 300mm

p16 – 17

Wall tiles EGZ4245POL 450 x 450mm

p18 – 19

Floor tiles BL5715 300x600mm
Wall tiles BL5715TOUCH 150 x 600mm

Bulb Chandelier Atelier Abigail Ahern,
137 Upper St, Islington, London N1 1QP
020 7354 8181, www.AtelierAbigailAhern.com

p21

Floor tiles EGC7010 600 x 600mm

p28 – 29

Floor tiles EGB4265 120 x 600mm
Skirting EGB4264 120 x 600mm
Wall tiles RO9201 100 x 100mm

p30

Floor tiles BL5715 300 x 300mm

p33

Floor tiles BAVPN00R10B 50 x 50mm
Wall tiles (lower) BAVPN11 200 x 200mm
Wall tiles (band) MA7901 15 x 47mm
Wall tiles (upper) BAVPN10 200 x 200mm

p35

Floor tiles EA6562STR 300 x 300mm
Wall tiles OM8802 25 x 25mm



All tiles supplied by

Grestec Tiles Limited
Unit 7
Wheelbarrow Park Estate
Pattenden Lane
Marden
Kent
TN12 9QJ

T: 0845 130 2241

F: 0845 130 2242

E: mail@grestec.co.uk

W: www.grestec.co.uk



www.reef-design.co.uk

For further information
on any of our products;

please call

0870 122 8822

or visit

www.thebluebook.co.uk



The bluebook has long been the most comprehensive guide to bathroom and washroom products. Now the bluebook DVD provides an interactive version allowing you to navigate through more than 1250 pages of detailed drawings and specifications instantly. Once installed on your hard drive, blue book can be automatically updated with the latest product information every time you go online.

A division of Ideal Standard (UK) Ltd.

© Armitage Shanks
P1289(1) 05/10

